

EU JUST CT 

Richard ELEK – The Hungarian experience of the regulator

National Center for Public Health and Pharmacy (NCPHP) – elek.richard@nnk.gov.hu

How did we choose counterparts

- The request to participate was only a formality.
- The selection criteria were:
 - Willingness to participate
 - The institution covers most of the referrals in a given region
 - The institution is a single entity and the volume of referrals for CT is more than 75/day on average.
 - The institution operates the most CT (>50%) machines, even if not on a single site
 - The institutions should not be located in the same region in order to be representative of different economic and geological locations
- Local (unpublished studies) shown 20...25% inappropriate exams.

Who participated?

County name	TOTAL CTs	Selected	Ratio	Region*
Borsod-Abaúj-Zemplén	10	7	70%	Northern Hungary
Hajdú-Bihar (Debrecen)	5	5	100%	Northern Great Plains
Csongrád (Szeged)	6	4	66,7%	Southern Great Plains
Baranya (Pécs)	7	5	71,4%	Southern Transdanubia



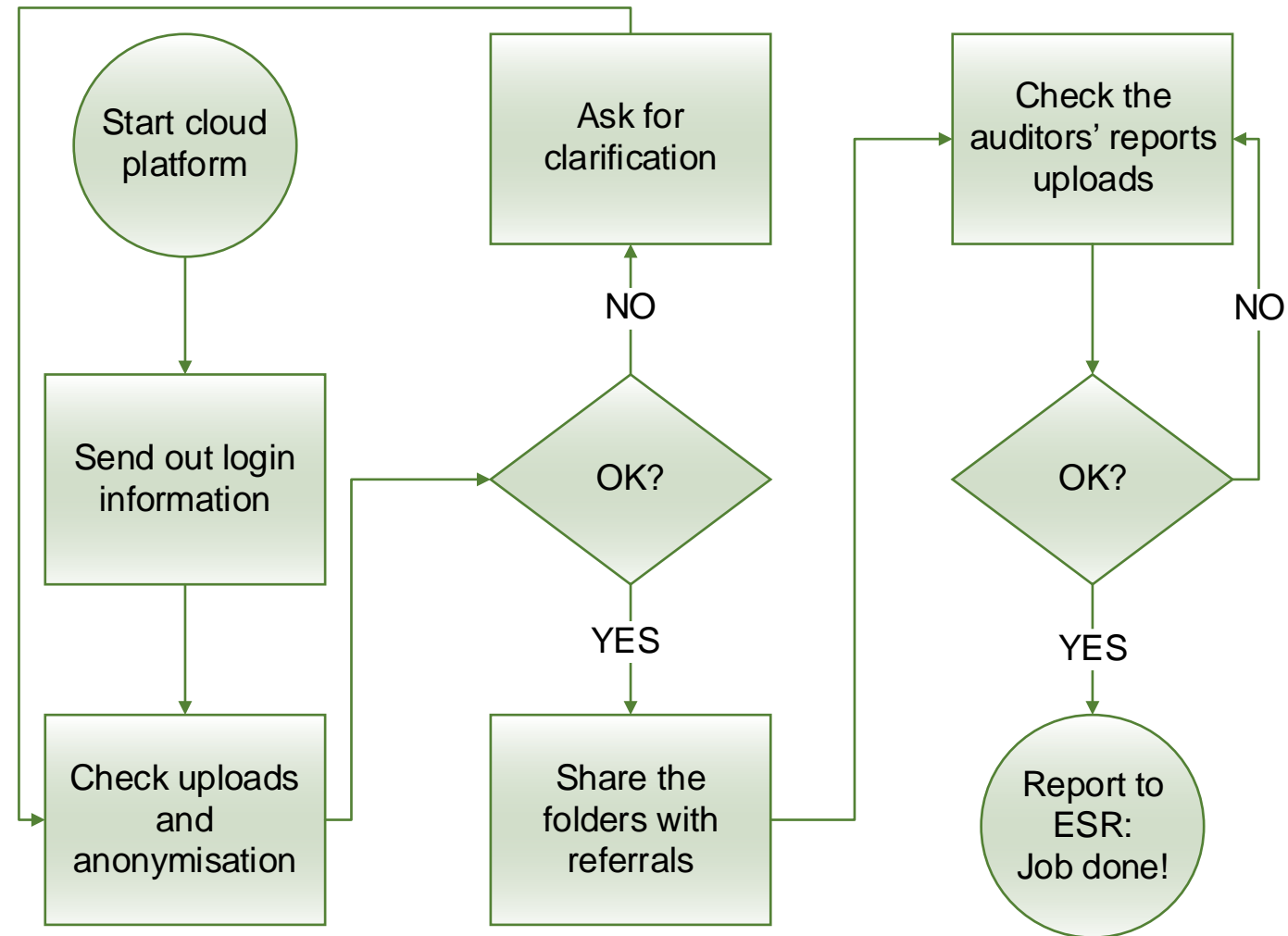
All centers are public healthcare institutions

* Regions are based on the NUTS-1 classification



How did we conduct the study?

- An official letter was sent by the Chief Medical Officer (after the already informal approach).
- A collaboration server was setup (with passwords, rights etc.)
- The auditors made correspondence on a regular basis.



Thank you for your attention!

